

CHARMILL

RESIDENTIAL



Holmdale Road, West Hampstead NW6
£599,950 Share of Freehold



Situated on the first floor of a well maintained mansion block in the heart of West Hampstead is this bright two bedroom apartment. This charming property comprises a south west facing open plan eat-in kitchen/reception room with large bay windows flooding the room with natural light, two double bedrooms, an en-suite bathroom off the principal bedroom and a shower room.

Holmdale Road is a quiet residential street positioned moments from the vast array of fashionable shops, cafes and restaurants on West End Lane. You will also find a number of transport links within walking distance namely West Hampstead London Overground station and West Hampstead Thameslink line which are both just 0.3 miles away as well as West Hampstead Underground station (Jubilee line) which is 0.4 miles away.

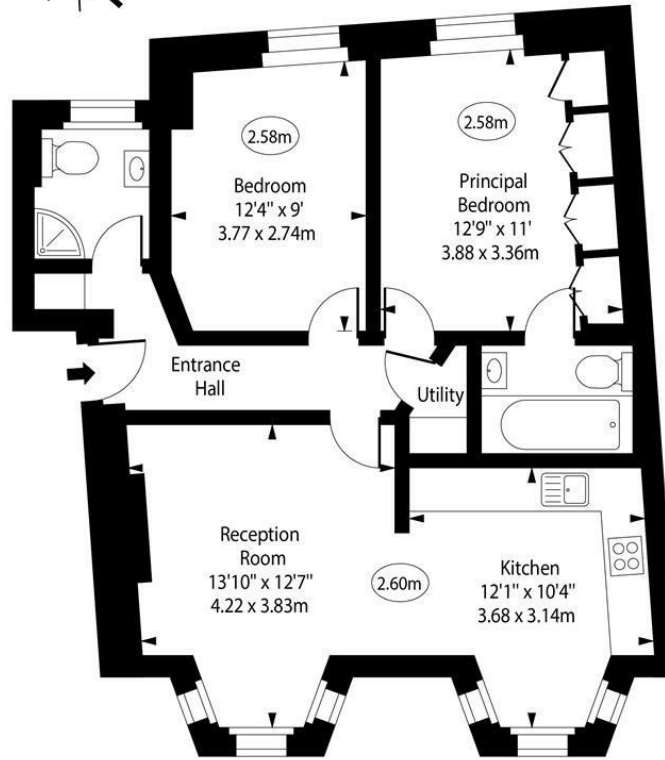


Floor Plan

Holmdale Mansions,
Holmdale Road, NW6



○ - Ceiling Height



First Floor

Approx Gross Internal Area 680 Sq Ft - 63.17 Sq M

For Illustration Purposes Only - Not To Scale
www.goldlens.co.uk
Ref. No. 020367R

These particulars, whilst believed to be accurate are set out as a general outline only for guidance and do not constitute any part of an offer or contract. Intending purchasers should not rely on them as statements of representation of fact, but must satisfy themselves by inspection or otherwise as to their accuracy. No person in this firm's employment has the authority to make or give any representation or warranty in respect of the property.



020 7046 6275 • sales@charmillresidential.co.uk • 51 Maida Vale, Little Venice, London W9 1SD

charmillresidential.co.uk